

Applications

Brio's Open Round Rail Face Fix hanger makes an ideal internal system for residential and commercial applications of timber panels with exposed hangers and rail.

The face fix hangers are 304 stainless steel with precision bearings.

Panel Specification

Track System: For Individual Panels: Max Panel Height Max Panel Width Max Panel Weight Panel Thickness	Open Round Rail Timber Face Fix 100 3000mm 2000mm 100kg 35-40mm
--	--

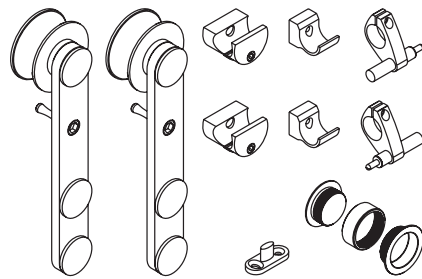
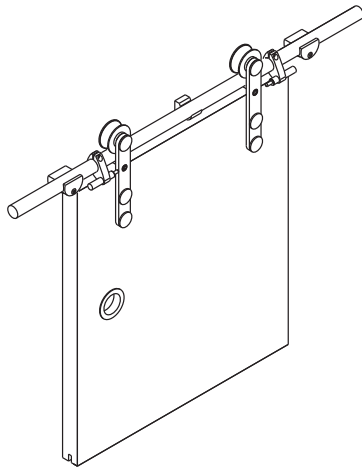
Standard Packs

Packs include hangers, door stops, guide, handle, brackets and fixings

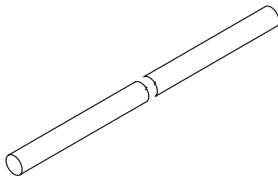
Pack No. ORF100 ORF100PR	Finish Stainless Steel PVD Black
---------------------------------------	---

Hardware Specification

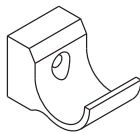
Track: Material Standard lengths Finishes	100OR Stainless Steel 2000mm, 2500mm, 3000mm and 4000mm Stainless Steel and PVD Black (except 4000mm)
Guides: Stainless precision bearing Nylon spring loaded guide	106E/94 108N/814
Channels: Polypropylene Aluminium & Polypropylene Aluminium Standard lengths	94P Black 94PPA Mill or clear anodised 814A Aluminium Rail Mill or clear anodised 2000mm, 3000mm, 4000mm and 6000mm
Support Bracket: Support bracket	100F-RB or 100F-RBPR



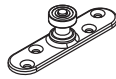
No. ORF100 HANGER SET



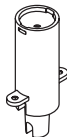
No. 100OR
ROUND RAIL



No. 100F-RB
SUPPORT BRACKET



No. 106E/94
GUIDE



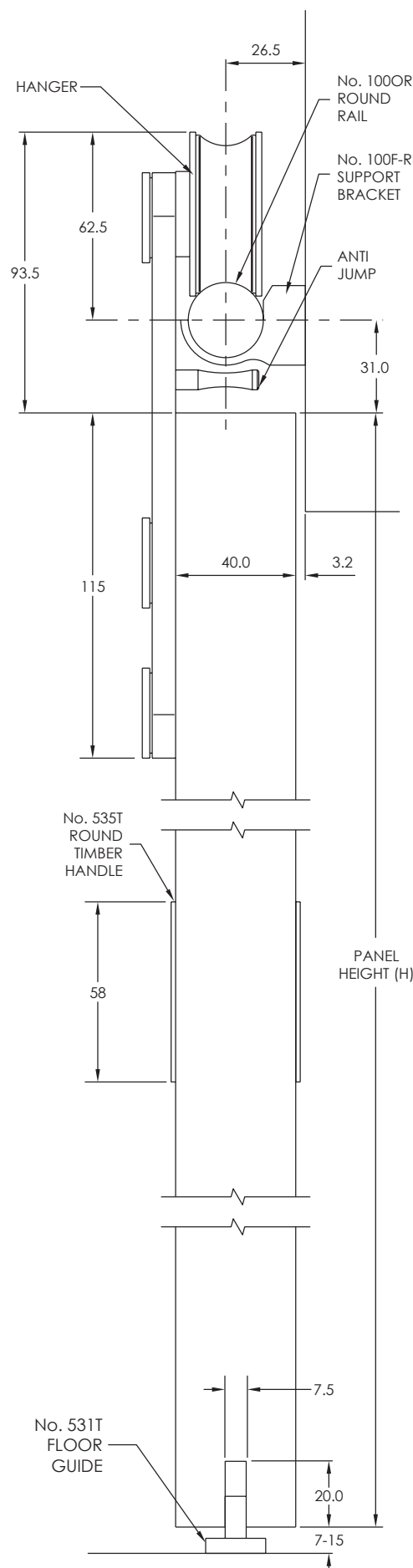
No. 108N/814
GUIDE



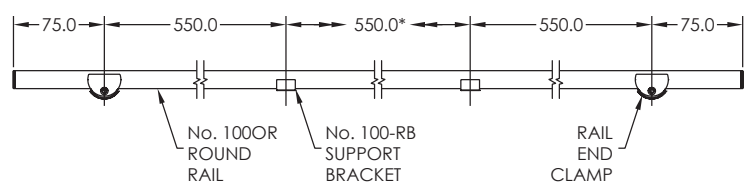
No. 94P
CHANNEL



No. 814A
RAIL



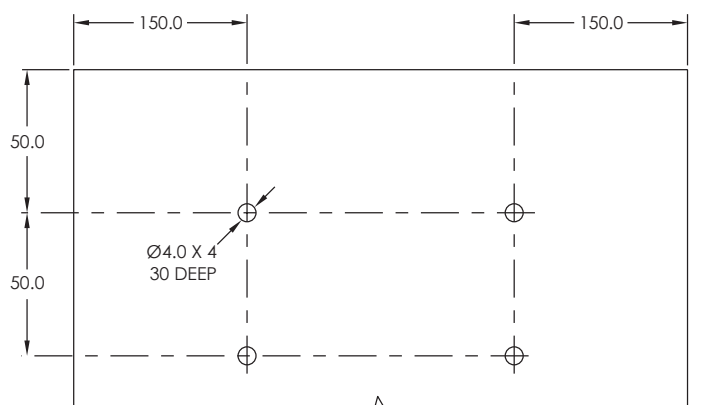
BRACKET PLACEMENT



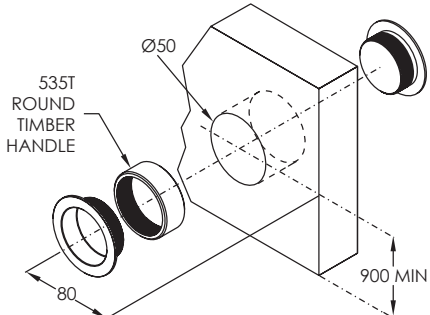
RAIL LENGTH	*ADDITIONAL No. 100F-RB REQUIRED
2500mm	1
3000mm	2
4000mm	4

PANEL PREPARATION

HANGERS (INSIDE FACE OF DOOR SHOWN)



ROUND TIMBER HANDLE



OPTIONAL GUIDES

